

# King City SS e-Newsletter



[2001 King Road, King City, ON L7B 1K2](#)

December 6, 2019

## Winter Concert: Winter Premiere



Last night, a captive audience was treated to an amazing night of music during KCSS' winter concert, titled Winter Premiere. There were performances by King City's Concert Band, Guitar Ensemble, Brass Quintet, Flute Ensemble, Jazz Big Band, Woodwind Ensemble, Percussion Trio, Clarinet Choir and a solo performance by Melody Fung. Kudos to Ms. Headon, Mr. Walker and our performers on a great show.



## Contact Us

**Phone 905.833.5332**

Extensions

Reception 150

Attendance 158

Guidance 106

Busing 152

[king.city.ss@yrdsb.ca](mailto:king.city.ss@yrdsb.ca)

## Online

[School website](#)

## Administration

**Principal**

[Joe D'Amico](#)

**Vice Principals**

[Pina Viscomi](#) (A-K)

[Tim Wesson](#) (L-Z)

## School Council

[Luisa Gale](#)

[Harpal Panesar](#)

## Superintendent

**Becky Green**

**Trustee**

**Bob McRoberts**



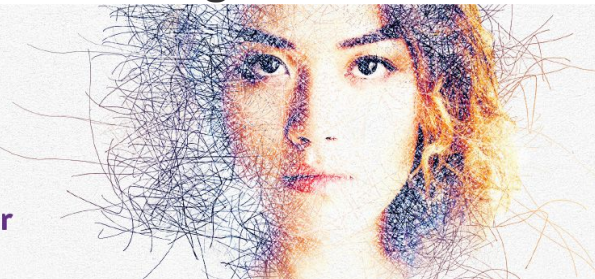
## School News

### The National Day of Remembrance and Action on Violence against Women

**16 DAYS  
OF ACTIVISM**

Against Gender-Based Violence

#OurActionsMatter



Today our school community marked the 30th anniversary of the shooting at L'école Polytechnique de Montréal, where 14 young women tragically lost their lives. In addition to our flag flying at half mast and announcements, students in their homeroom classes were asked to sign their name on a white ribbon as a pledge to stand up to violence against women.

### Last Chance for Spirit Wear!!

If you still wish to purchase some King City Lions clothing this is your last chance. You can order online through [School Cash Online](#) and then have your student submit the required order form to Mr. Gillison in phys.ed to finalize the purchase. You must get on this right away because sales will come to an end on Sunday Dec.8<sup>th</sup>.

If you have already ordered please ensure Mr. Gillison gets the order form this week otherwise he will not know what personalization you wish to have on your items and therefore the order is not processed and you won't receive your clothing. Order forms can be submitted to the phys.ed office.

**Order forms and sizing information on pages 4 & 5**

### Snow Clearance of Pathway

Please be reminded that in the winter, the municipality does not maintain (for example clear snow) the city owned portion of the back path that runs behind our field. Students who use the path should exercise caution when walking along the path in the winter.

### Important Dates

To view our entire school calendar online click [here](#).

#### Sunday December 8th

- ☐ Cheerleading @ Tribute Communities Centre - Departs 7:30 am Returns 2:00 pm

#### Monday December 9th

- ☐ Curling @ Bayview Curling Club - Departs 1:50 pm Game 3:00 pm
- ☐ Jazz Band Feeder School Tour

#### Wednesday December 11th

- ☐ Jazz Band Feeder School Tour

#### Thursday December 12th

- ☐ Jazz Band Feeder School Tour

#### Tuesday December 17th

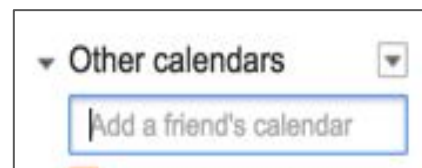
- ☐ Co-op Career Fair
- ☐ Mentor Workshop for Grade 9's - Period 3

#### Wednesday December 18th

- ☐ Student Council's Holiday Fair

### Do you use Google Calendar?

Add our email address to add our calendar to your calendar, and never miss an event again!

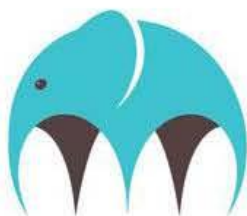


king.ss@gapps.yrdsb.ca





## School News



Parents for Children's  
Mental Health

SUPPORT. EDUCATE. EMPOWER.

## Monday, December 16th

*PARENTS' Support Group-all are welcome!*

### Topic: Homework and Learning Disabilities How to help, cope and advocate at school Presentation & Parent Discussion

Does your child's anxiety, ADHD, mood disorders, learning disability, or  
behaviour challenges make parenting difficult?

Future Meetings	Year 2020 meetings: Monday, January 20 topic to be announced Monday, February 24 our 4 <sup>th</sup> anniversary! Guest Speaker: Sleep – importance & how to get it Monday, March 23 topic to be announced Monday, April 20 topic to be announced Monday, May 18 topic to be announced Monday, June 15 topic to be announced
6:30 to 8:00 pm	No pre-registration is needed. All are welcome. Sorry no child minding available. Young children cannot safely be left unattended.
Where	*NEW*Aurora Kinark Office 218 Earl Stewart Drive, Unit 7, Aurora, ON L4G 6V7. One block south of St. John's Sideroad. One block west of Bayview Ave. Lots of free parking

#### Benefits of PCMH Support Group:

- meet other parents with children who have similar challenges
  - find encouragement and emotional support
- learn strategies to help your child or youth at home/school
  - learn how to access resources in the community

PCMH is the only provincial, family-led, non-profit organization that provides a voice for families who face the challenges of child and youth mental health issues. PCMH provides support, education, and linkage between families, communities, agencies and government. PCMH believes in the promotion of family-centred principles of care. PCMH envisions a future in which children and youth with mental illness enjoy a high quality of life in welcoming and supportive communities. For more information and resources, please visit [www.pcmh.ca](http://www.pcmh.ca).



# King City Secondary School

## SPIRIT WEAR ORDER FORM - 2019

Student's Name \_\_\_\_\_ Homeroom \_\_\_\_\_

Telephone Number \_\_\_\_\_



### RUSSELL DRI POWER CORE PERFORMANCE SHORT SLEEVE T-SHIRT

100% Polyester. Price includes a full front design.

QUANTITY & SIZING

MEN'S	S	M	L	XL	2XL
Dk.Green					
Stealth					
Steel					
White					

**COST**  
x \$27.00

3XL

**COST**  
x \$29.00

**TOTAL**  
=



### RUSSELL DRI POWER LONG SLEEVE T-SHIRT

60% Cotton/40% Polyester. Price includes a full front design.

QUANTITY & SIZING

MEN'S	S	M	L	XL	2XL
Dk.Green					
Black Heather					
Oxford					
White					

**COST**  
x \$22.00

3XL

**COST**  
x \$24.00

**TOTAL**  
=



### RUSSELL DRI POWER FLEECE PULLOVER HOODED SWEATSHIRT

50% Cotton/50% Polyester. Price includes a full front design, left sleeve name & lower name can be added for \$5.00 each.

QUANTITY & SIZING

MEN'S	S	M	L	XL	2XL
Dk.Green					
Black Heather					
Oxford					
White					

**COST**  
x \$42.00

3XL

**COST**  
x \$46.00

Player First Name or Nickname on Left Sleeve:

x \$ 5.00

Player Last Name on Lower Back:

x \$ 5.00 = **TOTAL** =



### RUSSELL DRI POWER FLEECE SWEATPANTS - Open Bottom

50% Cotton/50% Polyester. Price includes a left thigh design.

QUANTITY & SIZING

MEN'S	S	M	L	XL	2XL
Dk.Green					
Black Heather					
Oxford					

**COST**  
x \$37.00

3XL

**COST**  
x \$40.00

**TOTAL**  
=



### RUSSELL DRI POWER FLEECE SWEATPANTS - Closed Bottom

50% Cotton/50% Polyester. Price includes a left thigh design.

QUANTITY & SIZING

MEN'S	S	M	L	XL	2XL
Black Heather					
Oxford					

**COST**  
x \$32.00

3XL

**COST**  
x \$35.00

**TOTAL**  
=

#### METHOD OF PAYMENT:

Please make all payments via School cash online website

<https://yrdsb.schoolcashonline.com/>

**\*\*All prices include taxes.**

**GRAND TOTAL** \$





## School News - reminder

SIZE CHART / FABRIC

### SIZE CHARTS

#### MEN'S SIZE CHART

Alpha Size	Small	Medium	Large	1X-Large	2X-Large	3X-Large	4X-Large	5X-Large
Chest	34-36	38 - 40	42 - 44	46 - 48	50 - 52	54 - 56	58 - 60	62 - 64
Waist	28 - 30	32 - 34	36 - 38	40 - 42	44 - 46	48 - 50	52 - 54	56 - 58

#### MEN'S TALL SIZE CHART

	LT	XLT	2XT	3XT
Chest	42 - 44	46 - 48	50 - 52	54 - 56
Waist	36 - 38	40 - 42	44 - 46	48 - 50

#### YOUTH SIZE CHART

Alpha Size	X-Small	Small	Medium	Large	1X-Large
Chest	24 1/2 - 26	26 1/2 - 28	28 1/2 - 30	30 1/2 - 33	33 1/2 - 36
Waist	20 1/2 - 22	22 1/2 - 24	24 1/2 - 26	26 1/2 - 29	29 1/2 - 32

#### WOMEN'S SIZE CHART

Alpha Size	X-Small	Small	Medium	Large	1X-Large	2X-Large	3X-Large	4X-Large	5X-Large
Bust		33 1/2 - 35	35 1/2 - 37	37 1/2 - 40	40 1/2 - 43	43 1/2 - 46	46 1/2 - 50	50 1/2 - 54	54 1/2 - 58
Waist	23 1/2 - 25	25 1/2 - 27	27 1/2 - 29	29 1/2 - 32	32 1/2 - 35	35 1/2 - 38	38 1/2 - 42	42 1/2 - 46	46 1/2 - 50
Hips	33 1/2 - 35	35 1/2 - 37	37 1/2 - 39	39 1/2 - 42	42 1/2 - 45	45 1/2 - 48	48 1/2 - 52	52 1/2 - 56	56 1/2 - 60

NOTE: The measurements listed in the above charts are body measurements. Any person on the upper limits of these measurements should consider ordering the next size. Inseam measurements should always be specified on warmup pant orders. When no specific measurements are listed or the term AVERAGE INSEAMS is written, you will receive inseam lengths as listed on the charts above.

### FABRICS

Fabric#	Description	Content
14	Mediumweight Single Knit Jersey	White and colors: 100% cotton; Oxford: 42% cotton/58% polyester; Light Oxford: 92% cotton/8% polyester
15	Heavyweight Single Knit Jersey	White and colors: 100% cotton
30	Mediumweight NuBlend™ Single Knit	White and colors: 50% cotton/50% polyester; Oxford: 58% polyester/42% cotton Knit Jersey
43	Moisture Management Jersey	100% cotton
56	Stretch Porthole Mesh	100% nylon
62	Stretch Warp Knit	Colors: 92% nylon/8% spandex; White: 92% polyester/8% spandex
65	Bright Porthole Warp Knit	90% nylon/10% spandex
66	Heavyweight Warp Knit Porthole Mesh	100% polyester
72	Dri-Power® Jersey	Colors: 90% nylon/10% spandex; White 91% polyester/9% spandex
73	Bright Warp Knit	100% nylon
83	Lightweight Tricot Mesh	Colors: 100% nylon; White: 100% polyester
93	Bright Mediumweight Tricot Mesh	100% nylon; White: 100% polyester
AF	Tricot Mesh	100% nylon; White: 100% polyester
BJ	Textured Woven	100% nylon
BP	Dri-Power® Stretch Woven	95% nylon/5% spandex
BW	Brushed Woven	100% polyester
CA	Polyester Double Knit	100% polyester
CT	Micro Thermal	94% polyester/6% spandex
CL	Mediumweight Single Knit Jersey	100% cotton
D2	Dri-Power® Closed Hole Mesh	60% cotton/40% polyester
DB	Double Knit	100% polyester
DP	Dri-Power® Flat Back Mesh	100% polyester
DZ	Warp Knit	100% polyester
BW	Brushed Woven	100% polyester
EF	Wicking Performance Fleece	100% polyester
ET	Dri-Power® Oval Jacquard	97% nylon/3% spandex - 95% nylon/5% spandex
GH	Dri-Power® Mesh	100% polyester
HB	Dri-Power® Fleece	Colors 50% cotton/50% polyester; Oxford: 46% cotton/46% Dacron®/8% Black polyester
LP	Stretch Woven Rip Stop	Colors: 85% nylon/15% spandex; White: 86% polyester/14% spandex
LW	Stretch Interlock	100% polyester
LY	Stretch Adobe Weave - Birds Eye Mesh	100% polyester
ME	Micro Polar Fleece	100% polyester
MF	Dri-Power® Microfiber Mesh	100% polyester
MI	Dri-Power® Ottoman Knit Horizontal Stripe	Colors: 100% nylon; White: 100% polyester
NA	Dri-Power® Stretch Knit	88% polyester/12% spandex
NM	Nylon Tricot Mesh	100% nylon
NX	Dri-Power® Stretch Knit	80% polyester/20% spandex
PJ	Dri-Power® Double Knit	100% polyester
PM	Dri-Power® Ventilation Technology	92% nylon/8% spandex
QD	Stretch Woven	100% polyester
QP	Dri-Power® Ottoman Mesh	100% polyester
QS	Dri-Power® Jacquard Stripe	100% polyester
RE	Waterproof/Windproof Stretch Woven	55% PU/45% polyester
RK	Double Knit	White: 100% polyester
SM	Dri-Power® Stretch Mesh	Colors: 90% nylon/10% spandex; White: 90% polyester/10% spandex
S2	Lightweight Polyester/Spandex Warp Knit	Colors: 90% nylon/10% spandex; White: 91% polyester/9% spandex
TC	Tricot Mesh	Colors: 100% nylon; White: 100% polyester
VT	Dri-Power® Stretch	Colors and White: 92% nylon/8% spandex - 92% polyester/8% spandex
XC	XTREME POWER Warp Knit	Colors and White: 86% nylon/14% spandex - 86% polyester/14% spandex
XF	Mediumweight Fleece	65% cotton/35% polyester
XP	XTREME POWER Warp Knit	Colors and White: 82% nylon/18% spandex - 82% polyester/18% spandex
Z7	Bright Nylon Warp Knit Mesh	Colors: 88% nylon/12% spandex; White 88% polyester/12% spandex

Dacron® and Lycra® are INVISITA™ registered trademarks. DURASPUN™ is a Solutia® registered trademark.